

# Oval Strap Pool Assembly Supplement

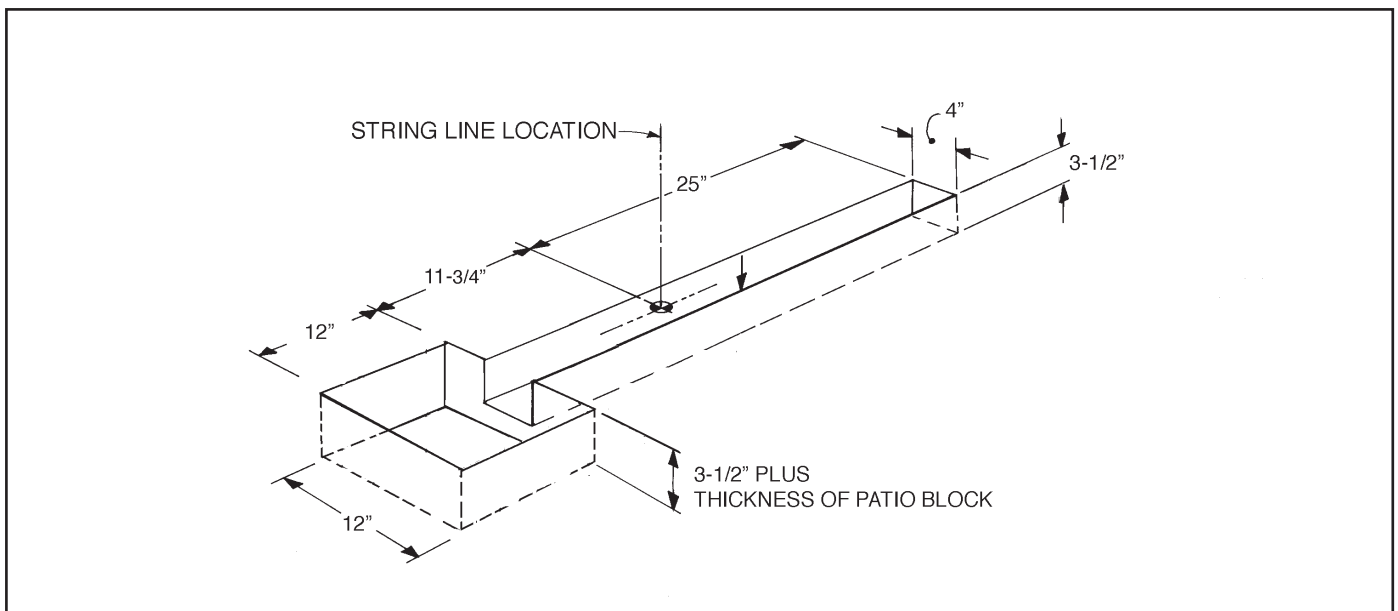
## Assembly/Installation Instructions

Use these instructions in conjunction with the assembly guide included with your pool. Instead of using the 8" x 8" x 16" concrete blocks, patio stone blocks will be used. Refer to the Side Support Excavation illustration in this guide for side support installation. All other instructions included with your pool for assembly need to be followed.

Refer to your Pool Assembly Guide and Pool Parts List for assembly and installation, modifying some procedures as outlined in these instructions.

### SIDE SUPPORT EXCAVATIONS - FOR TYPICAL ON GROUND INSTALLATION

When installing the pool on hard soil, tension straps can be used for installation. Refer to your Pool Assembly Guide and Pool Parts List for assembly and installation, modifying some procedures as outlined in these instructions. When excavating for side supports, use the dimensions below to install patio blocks instead of the 8"x8"x16" concrete blocks. Replace the concrete blocks required in your assembly guide with 12"x12" patio stones, thickness can vary on patio blocks, see illustration below.



**REFER TO YOUR ASSEMBLY GUIDE INCLUDED WITH YOUR POOL FOR DIGGING OUT FOR PRESSURE PADS AND INSTALLING THEM.**

**YOU WILL ALSO NEED TO DIG A TRENCH FROM EACH SUPPORT TO THE OPPOSITE SUPPORT FOR THE TENSION STRAP. SEE ILLUSTRATION ON PAGE 4.**

# 1 ASSEMBLE SIDE VERTICALS

Refer to the illustrations below with your Pool Parts List and Assembly Guide to assemble the side supports as shown. **NOTE: The skid support is deleted. DO NOT assemble the bottom rail locator, outside pressure pad or tension straps at this time.**

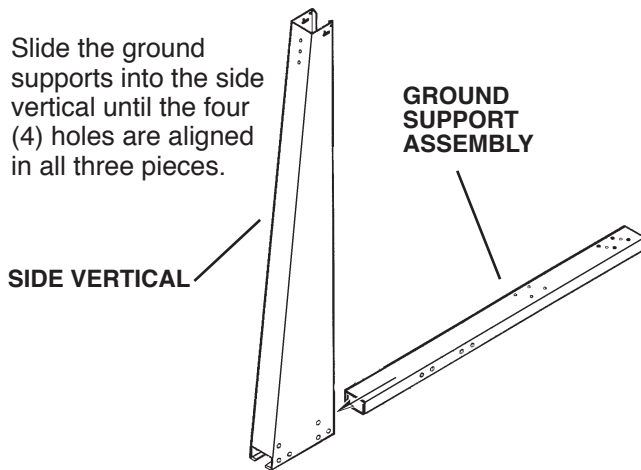
## A SLIDE SUPPORTS TOGETHER

Position the top ground support over the bottom ground support and lower it to enclose the bottom ground support.



## B SLIDE SUPPORTS INTO VERTICAL

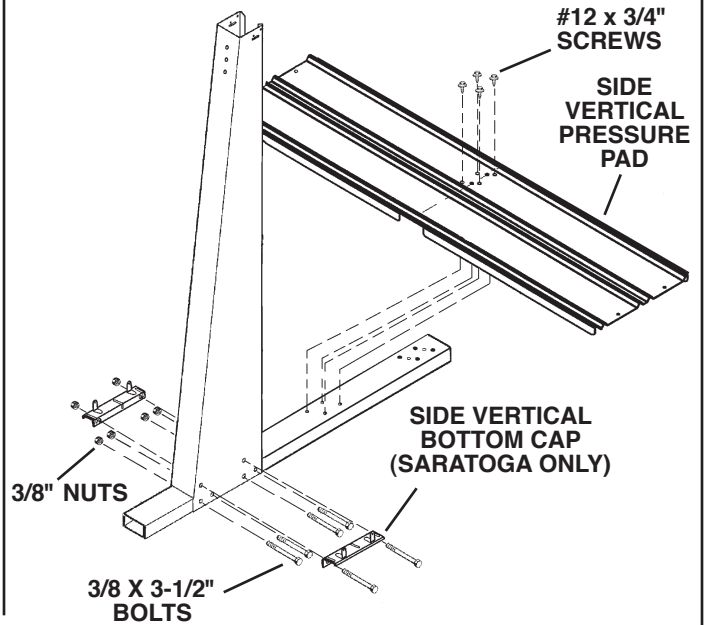
Slide the ground supports into the side vertical until the four (4) holes are aligned in all three pieces.



## C FASTEN VERTICAL TO GROUND SUPPORTS AND INSTALL SIDE VERTICAL PRESSURE PAD

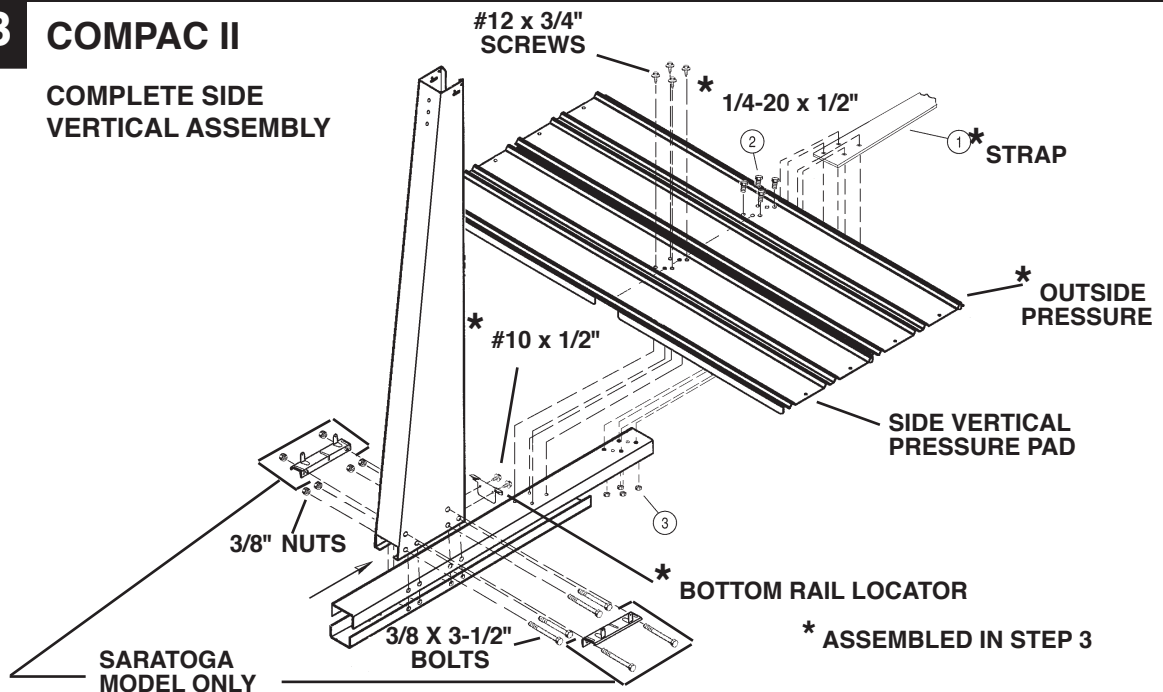
Fasten the vertical using four (4) 3/8" bolts and nuts as shown. Tighten securely using two 9/16" wrenches. Assemble the side vertical pressure pad to the ground support assembly using four (4) #12 x 3/4" screws. Tighten securely.

**SARATOGA ONLY:** Fasten the side vertical bottom caps using two (2) 3/8" bolts and nuts in the two upper holes as shown. **DO NOT ASSEMBLE ANY OTHER PARTS AT THIS TIME.**



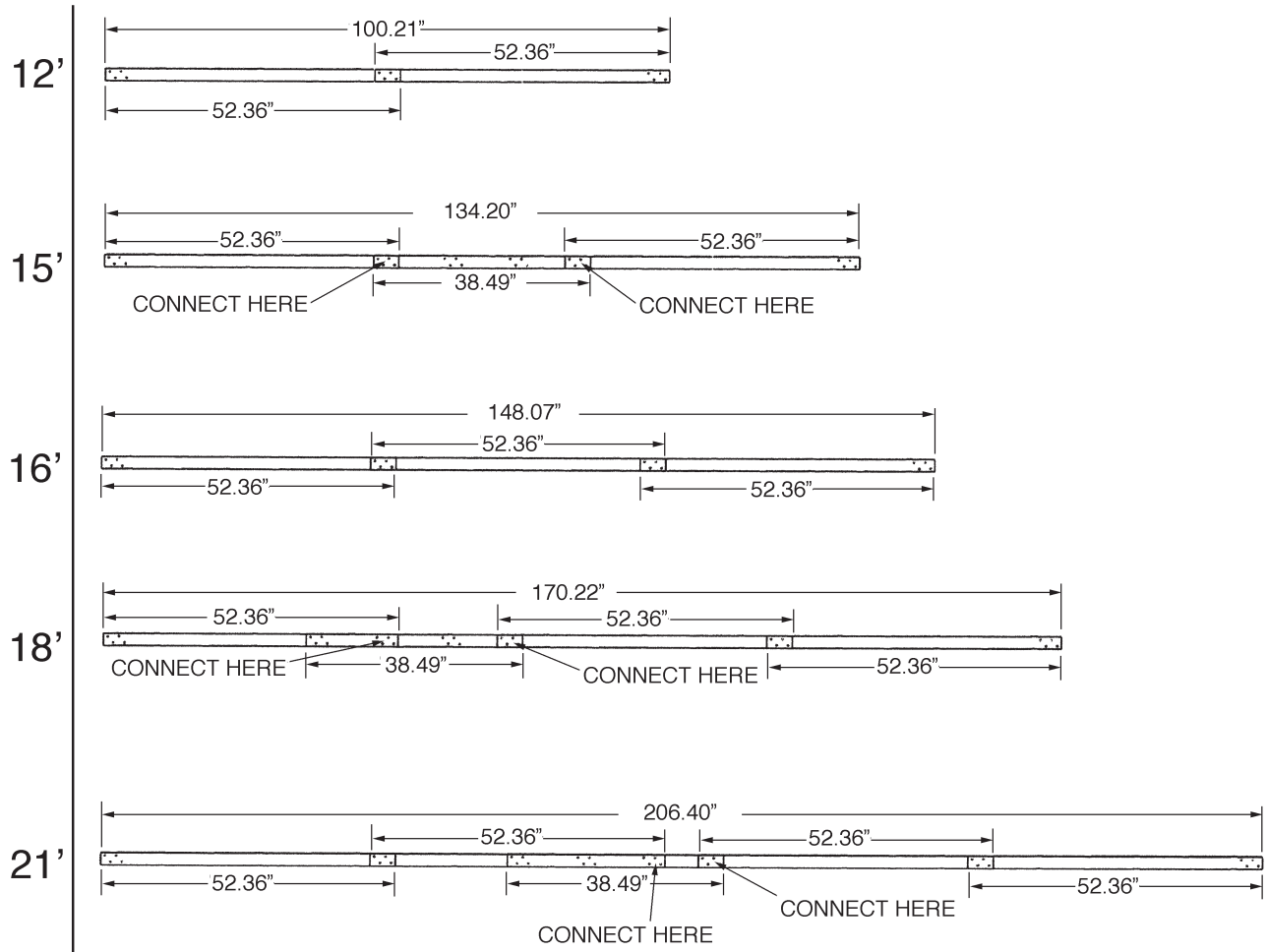
## Fig. B COMPAC II

COMPLETE SIDE VERTICAL ASSEMBLY

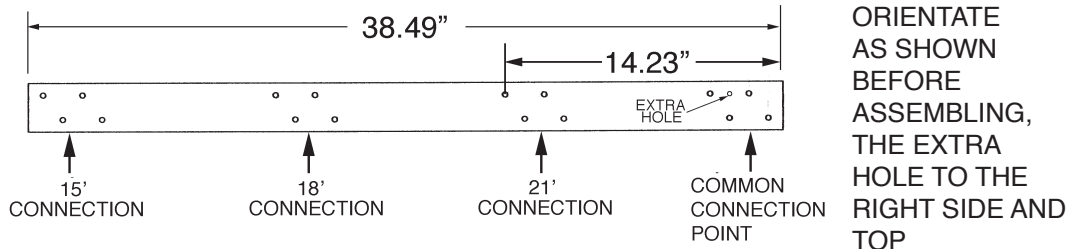


POOL WIDTH

STRAP LENGTHS



SHORT CONNECTION STRAP USED FOR 15', 18' AND 21' WIDE OVALS



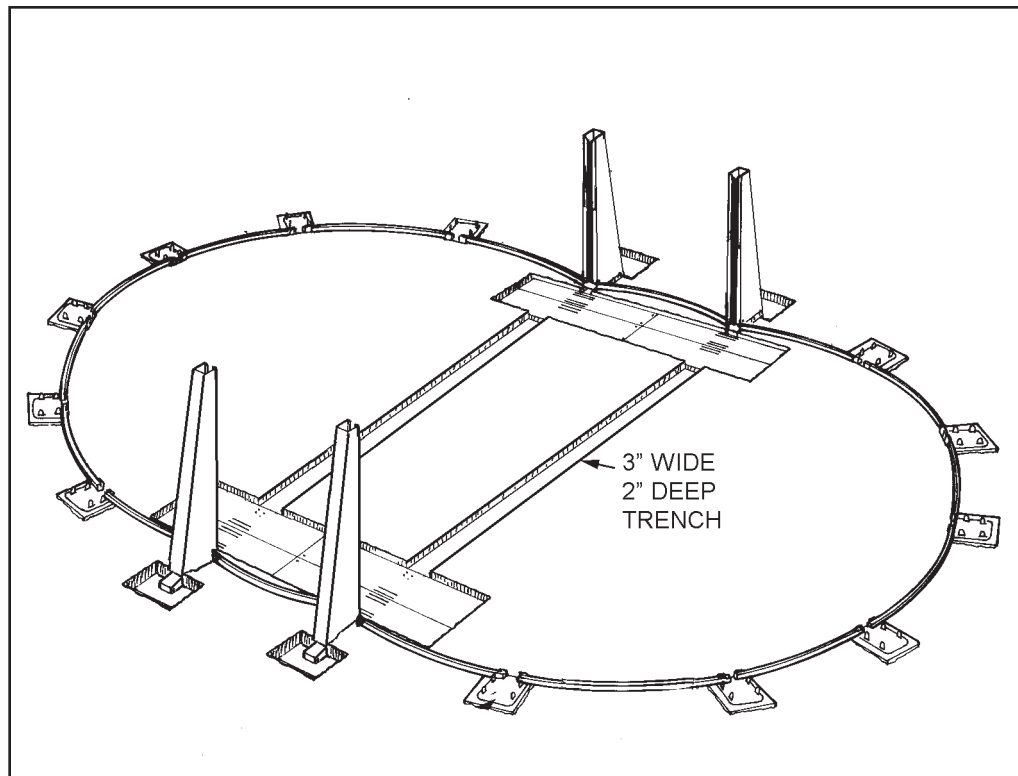
When installing tension straps, attach one end of the longest strap to the foundation beam and pressure pad assembly as shown in Fig B on page 2. The strap attaches between the pressure pad and foundation beam through the slot in the pressure pad. Use (4) each 1/4\"-20 -1/2\" bolts and nuts and tighten. Once attached to the side supports, connect the straps together by using (4) each 1/4\"-20x1/2\" bolts and nuts at each connection point, **make sure the bolt heads are on top of the straps.** See illustration above for proper strap assembly lengths and confirm before installation.

EXAMPLE: 21' wide oval pool strap assembly. To make one strap assembly, you will need 5 strap pieces consisting of 4 long straps and 1 short strap. To connect the short strap you will overlap the long strap and the short strap. Refer to the above diagram for the 21' connections. Connect the Common Connection Point on the short strap, make sure this is on the right hand side facing the strap with the holes orientated as shown and using the provided bolts and nuts. Now overlap the longer strap on the left hand side and use the holes closest to the Common Connection Point on the short strap and assemble with bolts and nuts. Connect all the other long straps together until you have 4 long straps and 1 short strap assembly. You will need 1 strap assembly for each pair of side supports. For example, If you have a total of 8 side supports, you will need 4 strap assemblies.

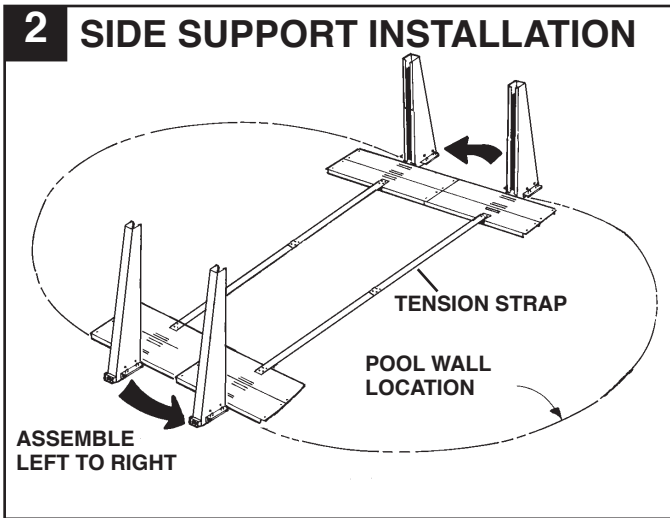
Once the strap assemblies are attached and completed and all hardware is tightened properly, place the side supports in the excavated area and on top of the patio blocks. Assure the side supports are square and parallel with each, measure diagonally from each outer side support on each corner. Make sure the measurements are the same. Double check your pool layout in your assembly guide for all other dimensions.

Refer to Step 2 and 3 on the following page for more information.

## DIG OUT FOR TENSION STRAPS



Once the excavation has been completed for the pressure pads, a 3" wide by 2" deep trench will be required for each tension strap assembly to be installed in. Scribe the area required to connect each side support with the opposite side support as shown in the illustration above. Remove the soil and save to use later to cover up the tension straps once they have been installed.

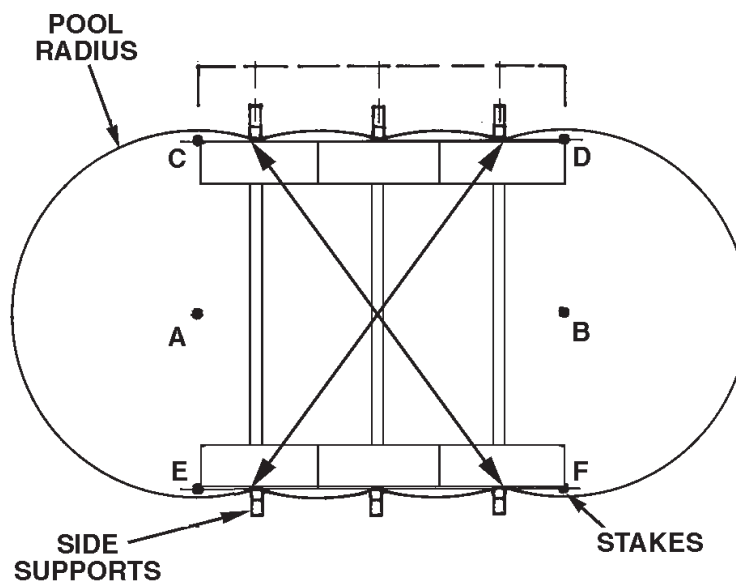


Position the side support assemblies at their installed locations. Place the outside pressure pad on the side support assembly and insert one end of the tension strap into the notch in the front lip of the pressure pad. Line up the four holes in the pressure pad, tension strap and upper ground support. Place four 1/4-20 bolts through the holes, tilt the side support assembly back and firmly secure the bolts with 1/4-20 nuts. Repeat this procedure for all side supports.

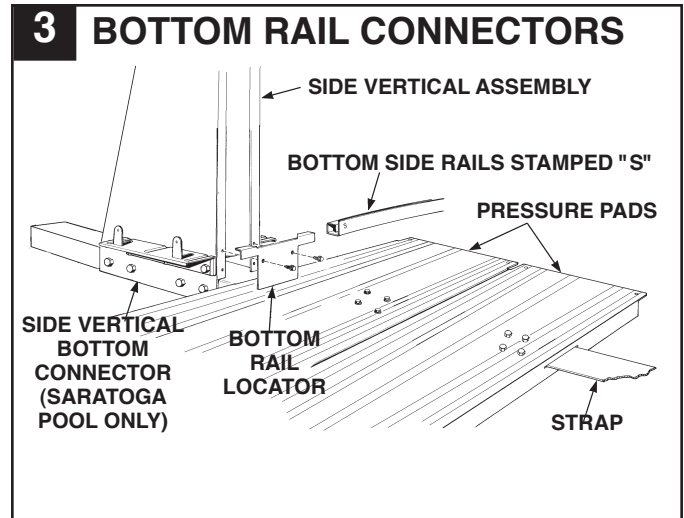
**BEFORE INSTALLING LINER, BE SURE THE TENSION STRAPS ARE LAYING FLAT IN THE TRENCH AND COVERED WITH DIRT. FAILURE TO PROPERLY COVER STRAPS COULD LEAD TO LINER DAMAGE AND IS NOT COVERED BY WARRANTY.**

**MEASURE DIAGONALLY  
SEE ILLUSTRATION BELOW.**

**YOUR POOL MAY HAVE MORE OR LESS SIDE SUPPORTS BUT ALWAYS MEASURE THE OUTER SUPPORT AS SHOWN.**



Once the strap assemblies are attached and completed and all hardware is tightened properly, place the side supports in the excavated area and on top of the patio blocks. To assure the side supports are square and parallel with each, measure diagonally from each outer side support on each corner and make sure the measurements are the same, if not adjust as needed so the measurements are the same for both sides. Double check your pool layout in your assembly guide for all other dimensions.



Assemble the bottom rail locators and bottom rails stamped "S" and attach them between the side verticals using the top two holes in the verticals.

**REFER TO YOUR POOLS ASSEMBLY GUIDE FOR COMPLETION OF YOUR POOL.**

## PARTS LIST

POOL WIDTH	ITEM NUMBER	DESCRIPTION	CONSIST OF:		BOLTS	NUTS	
			QTY	STRAP P/N	QTY	STRAP P/N	P/N 510-1018 QTY
12'	5-8495-222	2 PACK	(4)	580-2386	—	24	24
12'	5-8495-223	3 PACK	(6)	580-2386	—	36	36
15'	5-8495-232	2 PACK	(4)	580-2386	(2) 580-2387	32	32
15'	5-8495-233	3 PACK	(6)	580-2386	(3) 580-2387	48	48
16'	5-8495-262	2 PACK	(6)	580-2386	—	32	32
16'	5-8495-263	3 PACK	(9)	580-2386	—	48	48
18'	5-8495-242	2 PACK	(6)	580-2386	(2) 580-2387	40	40
18'	5-8495-243	3 PACK	(9)	580-2386	(3) 580-2387	60	60
21'	5-8495-252	2 PACK	(8)	580-2386	(2) 580-2387	48	48
21'	5-8495-253	3 PACK	(12)	580-2386	(3) 580-2387	72	72

<b>STRAP PART NUMBERS AND LENGTHS</b>	
<u>STRAP P/N</u>	<u>LENGTH</u>
580-2386	52.36"
580-2387	38.49"

**Hill • 315 N. Sebastian Street • West Helena, AR 72390**